

GENERAL NOTES:

1. All dimensions are to rough face of framing. At exterior walls, dimensions include 1/2" plywood sheathing.
2. Refer to Room Finish Schedule for finishes.
3. Refer to Window and Door Schedule for specifications of units.
4. Interior Elevations 'A', 'B', 'C', 'D', 'E', 'F', 'G', 'H', 'K' & 'P' are drawn on sheet #13.
5. Interior Elevations 'L', 'M', 'N', & 'J' are drawn on sheet #14.
6. Interior Elevations 'O', 'R', 'S', 'T', 'U', 'V', 'W', 'X', 'Y', 'Z', 'AA', 'BB', & 'CC' are drawn on sheet #15.
7. Interior Elevations 'DD', 'EE', 'FF', 'GG', & 'HH' are drawn on sheet #16.

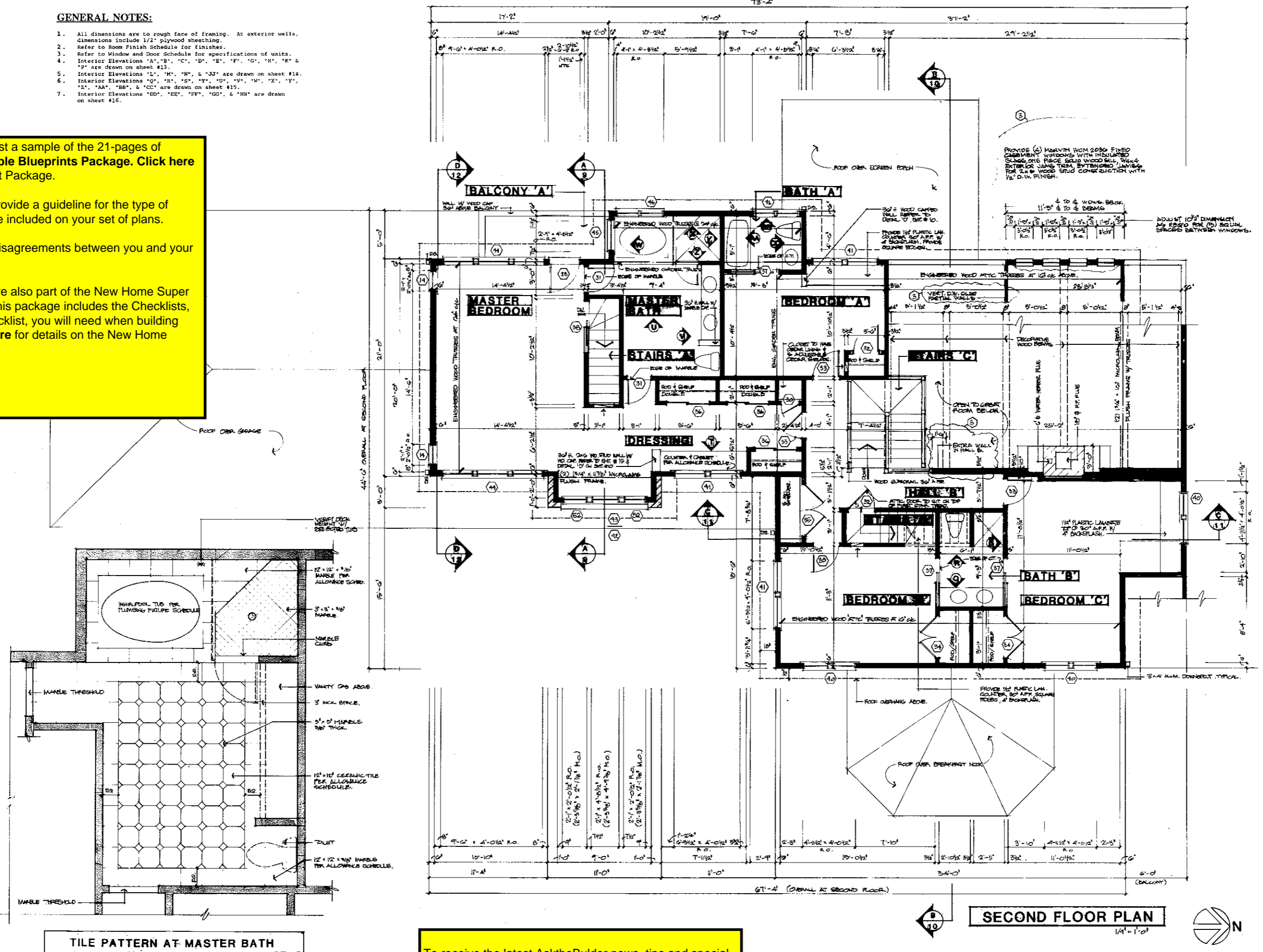
These three pages are just a sample of the 21-pages of blueprints in the full **Sample Blueprints Package**. [Click here](#) for the complete Blueprint Package.

The Sample Blueprints provide a guideline for the type of information that should be included on your set of plans.

Full details remove any disagreements between you and your contractor.

The Sample Blueprints are also part of the New Home Super Combo Deal Package. This package includes the Checklists, in the Walk Through Checklist, you will need when building your new home. [Click here](#) for details on the New Home Super Combo Deal.

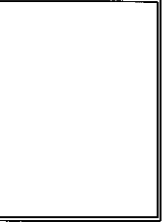
Tim Carter
AsktheBuilder.com



TILE PATTERN AT MASTER BATH
1/2" = 1'-0"

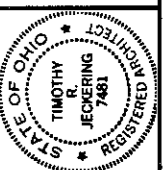
SECOND FLOOR PLAN
1/4" = 1'-0"

To receive the latest AsktheBuilder news, tips and special discounts, **CLICK HERE** to sign up for Tim's FREE Newsletter.



513 542-2500

Tim Jeckering Architects
Personalized Architectural Services
4833 Uniontown Avenue
Cincinnati, OH 45228
(513) 542-2500



REVISIONS
1. 05/27/93
2. 06/02/93
3. 06/02/93
4. 06/02/93
5. 06/02/93

PROPOSED NEW RESIDENCE

4
May 27, 1993



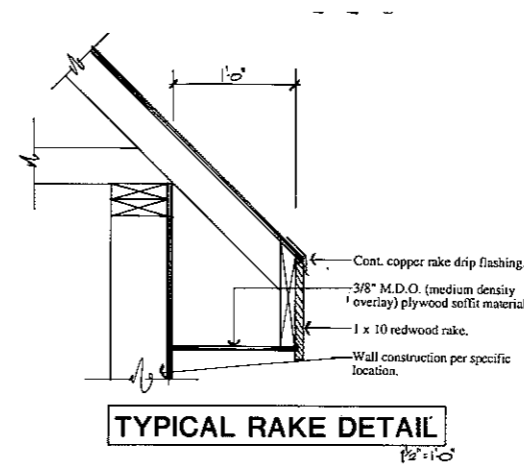
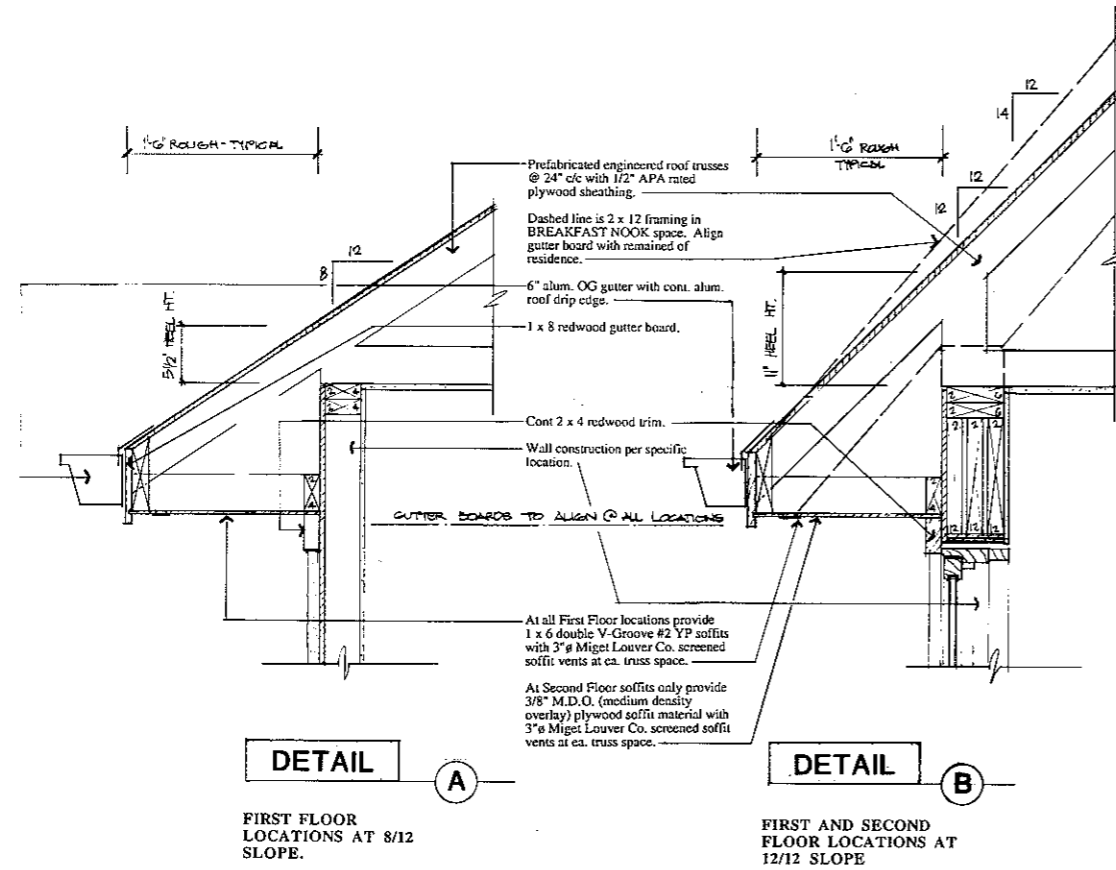
These three pages are just a sample of the 21-pages of blueprints in the full **Sample Blueprints Package**. [Click here](#) for the complete Blueprint Package.

The Sample Blueprints provide a guideline for the type of information that should be included on your set of plans.

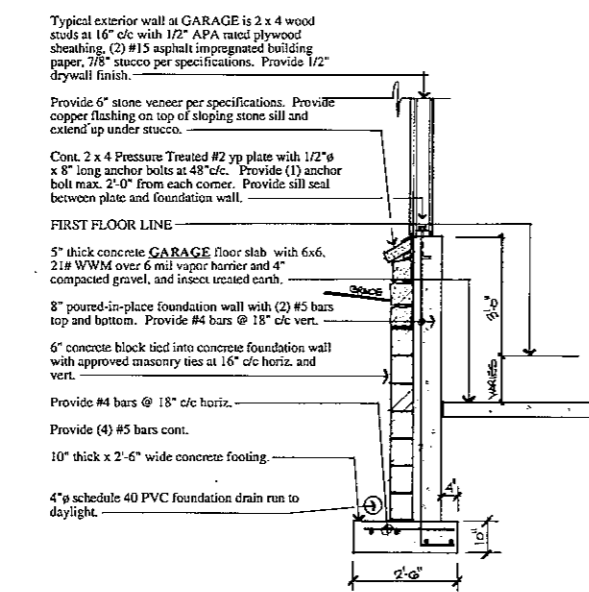
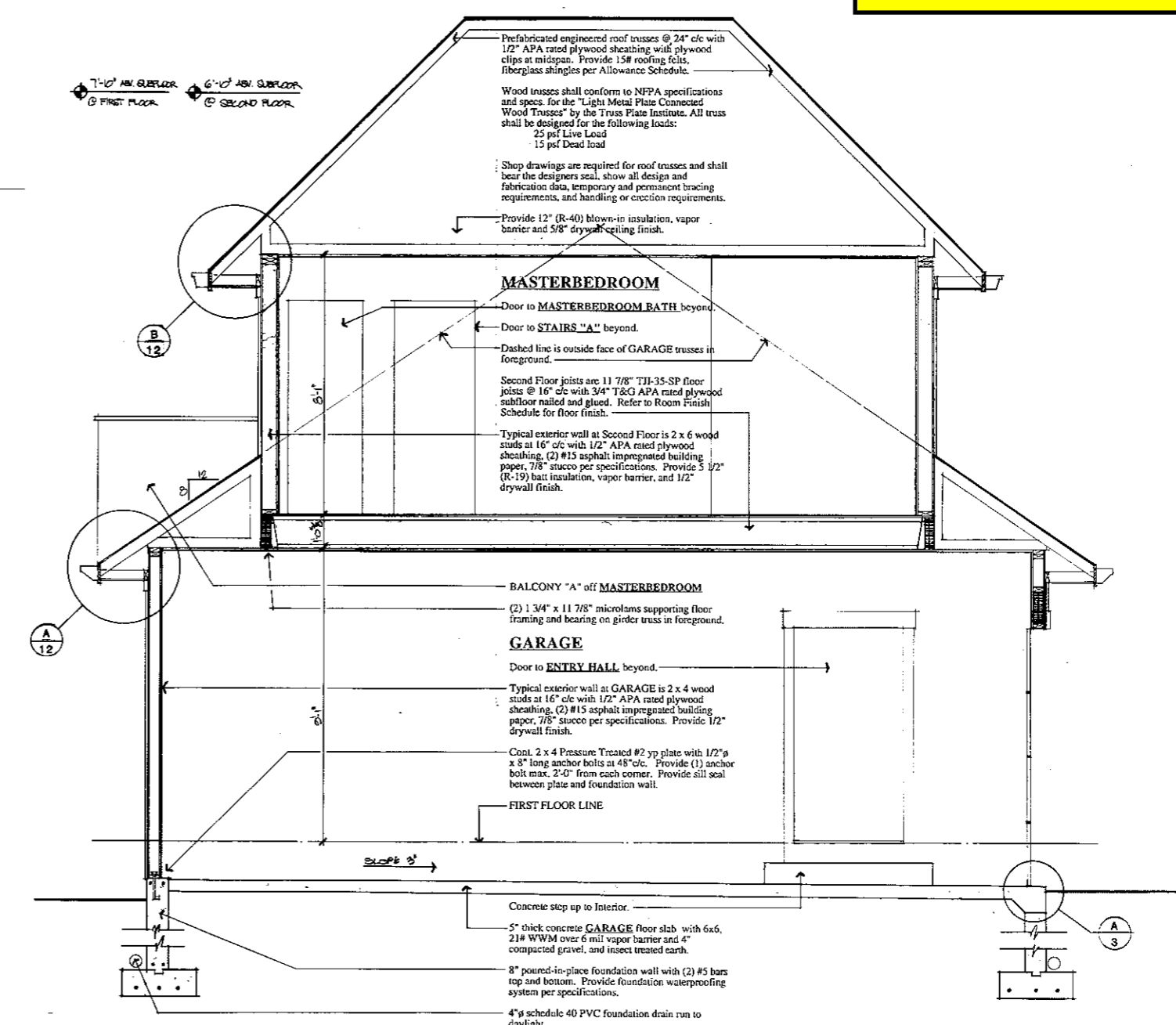
Full details remove any disagreements between you and your contractor.

The Sample Blueprints are also part of the New Home Super Combo Deal Package. This package includes the Checklists, in the Walk Through Checklist, you will need when building your new home. [Click here](#) for details on the New Home Super Combo Deal.

Tim Carter
AsktheBuilder.com



9'-0" HGV. SUBFLOOR @ BREAKFAST RM ONLY.
9'-1" HGV. SUBFLOOR @ FIRST FLOOR
8'-1" HGV. SUBFLOOR @ SECOND FLOOR
7'-0" HGV. SUBFLOOR @ FIRST FLOOR
6'-0" HGV. SUBFLOOR @ SECOND FLOOR



Tim Carter
PERSONAL

STATE OF OHIO
REGISTERED ARCHITECT
TIMOTHY F. JECORING
1981

revisions

PROPOSED NEW RESIDENCE

12

May 27, 1993

To receive the latest AsktheBulder news, tips and special discounts, [CLICK HERE](#) to sign up for Tim's FREE Newsletter.

BUILDING SECTION D

PARTIAL WALL SECTION C

These three pages are just a sample of the 21-pages of blueprints in the full **Sample Blueprints Package**. [Click here](#) for the complete Blueprint Package.

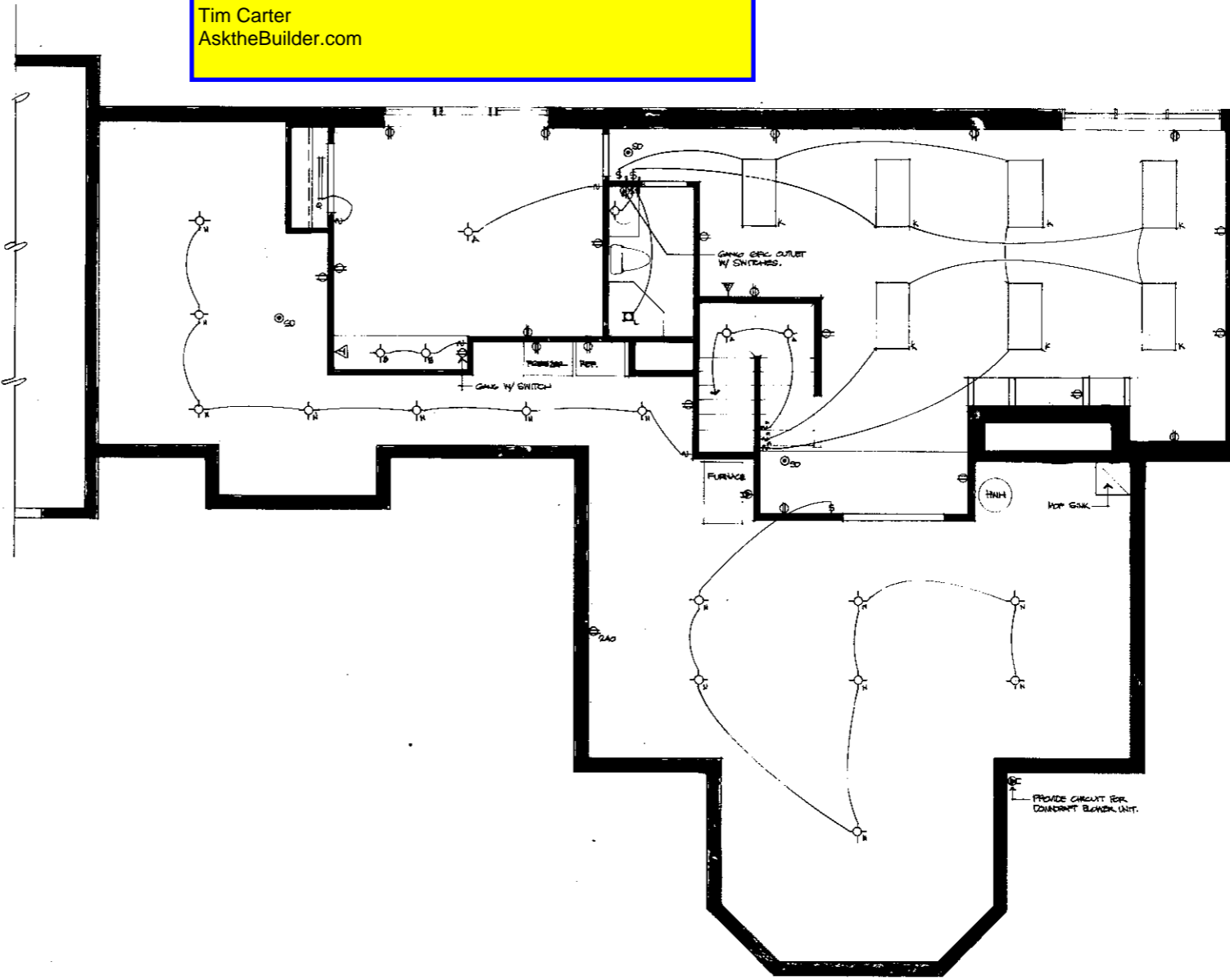
The Sample Blueprints provide a guideline for the type of information that should be included on your set of plans.

Full details remove any disagreements between you and your contractor.

The Sample Blueprints are also part of the New Home Super Combo Deal Package. This package includes the Checklists, in the Walk Through Checklist, you will need when building your new home. [Click here](#) for details on the New Home Super Combo Deal.

Tim Carter
AsktheBuilder.com

ELECTRICAL FIXTURE SCHEDULE			
MARK	DESCRIPTION	BID	ALLOWANCE
A	Surface Mounted Fixture. Fixture selected by Owner.	Supplied and installed by contractor	\$75.00
B	Recessed Can Light, Halo H-7 with R426 Specular Clear Reflector Cone. Provide 75 watt R30 lamp.	bid	
C	Recessed Can Light, Halo H-7 ICF with Specular Clear Reflector Cone. Provide 75 watt R30 lamp.	bid	
D	Wall mounted recessed light fixture. Refer to Drawg for height location. Fixture selected by Owner.	Supplied and installed by contractor	\$250.00
E	Exterior Wall mounted light fixture. Refer to Drawg for height location. Fixture selected by Owner.	Supplied and installed by contractor	\$ 75.00
F	Ceiling Mounted Fan. Fixture selected by Owner.	Supplied and installed by contractor	\$250.00
G	Halo H-7 ICF recessed can light for installation in sloping ceilings with 4987 trim and 75 watt R-40 lamp.	bid	
H	4'-0" double exposed tube fluorescent fixture ceiling mounted fixture. equal to Simlar (available thru Woolley Electric Co.)	bid	
I	2'-0" under cabinet mounted 21" miniature fluorescent fixture by Alloco.	bid	
J	2'-0" surface mounted fluorescent fixture with four F40T12C50 fluorescent tubes. #P7222 trim with #P7216 chassis. "Clouds of Light" by Progress Lighting.	bid	
K	Combination Light/Fan with ceiling to exterior. Fixture shall be Natonc #5653P in white.	bid	
L	Exhaust fan with ducting to exterior. Fan shall be Natonc QT-80 in white.	bid	
M	Bare bulb porcelain surface mounted fixture w/ 100 watt lamp.	bid	
N	Pendant Fixture. Contractor to supply additional blocking as required to support weight of fixture.	Supplied and installed by contractor	\$500.00
P-1	Pendant Fixture. Contractor to supply additional blocking as required to support weight of fixture.	Supplied by owner and installed by contractor. Bid for installation only.	
P-2	Pendant Fixture. Contractor to supply additional blocking as required to support weight of fixture.	bid	
Q	2'-0" double exposed tube fluorescent fixture, ceiling mounted.	bid	
R	100 watt exterior flood lamp.	bid	
S	Doorbell	bid	
T	Flush wall mounted television antenna jack in white with white coverplate.	bid	
U	Flush wall mounted telephone jack in white with white coverplate.	bid	
V	Wall mounted duplex receptacle in white with white coverplate.	bid	
W	Flush wall mounted ground fault interrupt protected duplex receptacle in white with white coverplate. Provide GFCI circuit breaker at panel board for protection of these receptacles. Receptacles to be standard duplex type to match other non GFCI protected receptacles.	bid	
X	Split wired wall mounted duplex receptacle in white with white coverplate.	bid	
Y	Flush wall mounted ground fault interrupt protected sensitive duplex receptacle with coverplate. Provide GFCI circuit breaker at panel board for protection of these receptacles.	bid	
Z	Flush mounted #5-0188 single receptacle in dark brown color mounted into #B-2589 receptacle floor box with #S-2030 solid brass cover as manufactured by Hubbell.	bid	
AA	Wall mounted quadruplex receptacle in white with white coverplate.	bid	
AB	Smoke detector hardwired into electric service with battery backup.	bid	
AC	Single pole switch in white with white coverplate.	bid	
AD	Three way switch in white with white coverplate.	bid	
AE	Switch with Dimmer feature. Provide with three way switching as required. Provide white switching device with white coverplate. Dimmer shall be A.Y. 600 Series by Lutron.	bid	
AF	Four way Switch in for multiple switch location applications as required and as indicated in the Drawings. Provide with white switching device with white coverplate. Special purpose 120 volt connection. Refer to plan location for specifics.	bid	
AG	Special purpose 240 volt connection. Refer to plan location for specifics.	bid	
AHTU #	Air Handling Unit. Consult HVAC plans for additional information.	bid	



BASEMENT REFLECTED CEILING PLAN

To receive the latest AsktheBulder news, tips and special discounts, [CLICK HERE](#) to sign up for Tim's FREE Newsletter.

513 542-2500

Tim Jeckering Architects
Personalized Architectural Services

4301 Hamilton Avenue
Cincinnati, OH 45227

STATE OF OHIO ARCHITECT
TIMOTHY R. JECKERING
7/8/81 REGISTERED

revisions

PROPOSED NEW RESIDENCE

17

May 27, 1993